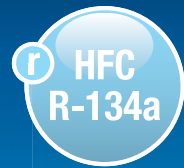


FOCS VISION 2.0

AIR SOURCE CHILLERS FOR OUTDOOR INSTALLATION



HIGH EFFICIENCY



LATEST CONTROL SYSTEM



LEED RELEVANT PRODUCT



EXTREMELY SILENT OPERATIONS

 **CLIMAVENETA**
SUSTAINABLE COMFORT

FOCS^{VISION}_{2.0} Features

FOCS2/CA^{VISION}_{2.0}

High efficiency chiller, air source for outdoor installation
307-1543 kW

Outdoor unit for the production of chilled water with semi-hermetic screw compressors optimized for R134a, axial-flow fans, condensing coil with copper tubes and aluminium fins, single step shell and tubes evaporator designed by Climaveneta and electronic expansion valve.

Base and supporting structure and panels are of galvanized epoxy powder coated steel with increased thickness. Flexible and reliable unit; it easily adapts to different thermal load conditions thanks to the precise thermoregulation. The high performance's level is achieved thanks to the accurate sizing of all internal components.



Version

- CA: Class A of efficiency
- SL-CA: Super Low noise version, Class A of efficiency
- CA-E: Premium efficiency version: Class A enhanced
- SL-CA-E: Super Low noise version, Premium efficiency, Class A

Configurations

- basic function
- D partial condensing heat recovery function
- R total condensing heat recovery function



High efficiency

Unit in Class A as per Eurovent. High efficiency for low energy consumption during the operating hours



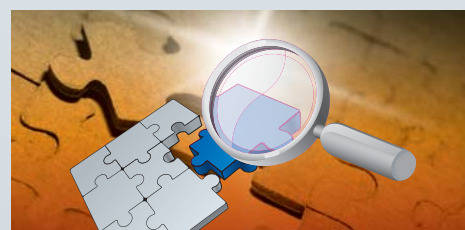
Version 'CA-E' available

The version 'CA-E' is characterized by efficiency beyond the 'Class A' for Eurovent. The technological choices adopted ensure minimized operational costs and therefore a quick payback time.



Extremely silent operation

As result of a systematic design oriented to minimize the noise level, the silenced version units give the best compromise between silence and efficiency on the market.



Flexibility

Flexibility in applications thanks to the many available configurations and versions



LEED relevant product

These units operate in compliance with the performance standard contained in the protocol of sustainability LEED



Extensive range of operation

Extensive range of operation with external air temperature up to 46°C at fullload; with total heat recovery, hot water can be produced up to a temperature of 55°C.



W3000 large latest control system

The controller, featuring advanced functions and proprietary settings, thanks to bigger memory allows even faster adaptive responses to different dynamics.



As an option there is a new interface touch screen:

- color display 7" that allows to intuitively navigate between the different screens.

FOCS2/K VISION 2.0

Chiller, air source for outdoor installation 295-1818 kW

Outdoor unit for the production of chilled water with semi-hermetic screw compressors optimized for R134a, axial-flow fans, condensing coil with copper tubes and aluminium fins, single step shell and tubes evaporator designed by Climaveneta and electronic expansion valve.

Base and supporting structure and panels are of galvanized epoxy powder coated steel with increased thickness. Flexible and reliable unit; it easily adapts itself to different thermal load conditions thanks to the precise thermoregulation. The unit has been designed to optimise the costs-performances ratio.



Version

- K:** Standard efficiency, compact version
- SL-K:** Key efficiency, compact and super low-noise version

Configurations

- basic function
- D** partial condensing heat recovery function
- R** total condensing heat recovery function

Technical Data

FOCS2/CA Vision 2.0 / CA			1502	1702	1902	1922	2202	2602	2652	2702	2722	3152
Power supply	V/ph/Hz		400/3/50	400/3/50	400/3/50	400/3/50	400/3/50	400/3/50	400/3/50	400/3/50	400/3/50	400/3/50
PERFORMANCE												
COOLING ONLY (GROSS VALUE)												
Cooling capacity	(1) kW		311	356	406	455	512	558	597	634	704	775
Total power input	(1) kW		97,8	113	127	145	163	178	189	199	223	245
EER	(1)		3,18	3,16	3,19	3,15	3,15	3,14	3,16	3,18	3,15	3,17
ESEER	(1)		4,06	4,13	4,22	4,35	4,05	4,18	4,17	4,23	4,18	4,08
COOLING ONLY (EN14511 VALUE)												
Cooling capacity	(1)(2) kW		310	355	405	454	511	557	595	632	701	772
EER	(1)(2)		3,15	3,12	3,14	3,11	3,11	3,10	3,12	3,14	3,11	3,12
ESEER	(1)(2)		3,95	4,00	4,06	4,23	3,92	4,05	4,03	4,07	4,04	3,92
Cooling energy class			A	A	A	A	A	A	A	A	A	A
EXCHANGERS												
HEAT EXCHANGER USER SIDE IN REFRIGERATION												
Water flow	(1) m ³ /h		53,5	61,3	69,9	78,4	88,2	96,1	103	109	121	133
Pressure drop	(1) kPa		24,6	32,2	41,9	29,0	36,7	34,8	39,8	44,9	44,0	53,4
COMPRESSORS												
Compressors nr.	N°		2	2	2	2	2	2	2	2	2	2
No. Circuits	N°		2	2	2	2	2	2	2	2	2	2
NOISE LEVEL												
Noise Pressure	(3) dB(A)		66	66	67	67	68	68	69	68	68	68
Noise Power	(4) dB(A)		98	98	99	99	100	100	101	101	101	101
SIZE AND WEIGHT												
A	(5) mm		4000	4000	4000	4900	4900	5800	5800	7000	7600	7600
B	(5) mm		2260	2260	2260	2260	2260	2260	2260	2260	2260	2260
H	(5) mm		2500	2500	2500	2500	2500	2500	2500	2500	2500	2500
Operating weight	(5) kg		3530	3650	3780	4260	4920	5370	5460	5920	6660	7070

FOCS2/CA Vision 2.0 / CA			3602	3902	4202	4502	4802	4822	5412	5703	6303	6603
Power supply	V/ph/Hz		400/3/50	400/3/50	400/3/50	400/3/50	400/3/50	400/3/50	400/3/50	400/3/50	400/3/50	400/3/50
PERFORMANCE												
COOLING ONLY (GROSS VALUE)												
Cooling capacity	(1) kW		851	906	978	1050	1103	1203	1255	1363	1469	1543
Total power input	(1) kW		269	286	307	327	346	377	400	433	468	491
EER	(1)		3,17	3,16	3,18	3,21	3,19	3,19	3,14	3,15	3,14	3,14
ESEER	(1)		3,94	4,01	4,10	4,16	4,17	4,22	4,20	4,01	4,16	4,19
COOLING ONLY (EN14511 VALUE)												
Cooling capacity	(1)(2) kW		848	902	974	1046	1099	1198	1251	1361	1466	1540
EER	(1)(2)		3,13	3,12	3,13	3,17	3,14	3,14	3,10	3,13	3,12	3,11
ESEER	(1)(2)		3,81	3,86	3,94	4,01	4,01	4,04	4,07	3,94	4,07	4,10
Cooling energy class			A	A	A	A	A	A	A	A	A	A
EXCHANGERS												
HEAT EXCHANGER USER SIDE IN REFRIGERATION												
Water flow	(1) m ³ /h		147	156	168	181	190	207	216	235	253	266
Pressure drop	(1) kPa		45,9	52,1	53,5	47,7	52,7	58,7	40,1	22,0	25,6	28,2
COMPRESSORS												
Compressors nr.	N°		2	2	2	2	2	2	2	2	3	2
No. Circuits	N°		2	2	2	2	2	2	2	3	3	3
NOISE LEVEL												
Noise Pressure	(3) dB(A)		69	69	70	70	70	70	71	71	71	71
Noise Power	(4) dB(A)		102	102	103	103	103	103	104	104	104	104
SIZE AND WEIGHT												
A	(5) mm		7600	8500	9400	10300	11200	11200	11200	11200	11200	11200
B	(5) mm		2260	2260	2260	2260	2260	2260	2260	2260	2260	2260
H	(5) mm		2500	2500	2500	2500	2500	2500	2500	2500	2500	2500
Operating weight	(5) kg		7460	8220	8800	9340	9570	9820	10150	12270	12720	12830

Notes:

1 Plant (side) cooling exchanger water (in/out) 12°C/7°C; Source (side) heat exchanger air (in) 35°C

2 Values in compliance with EN14511-3:2011

3 Average sound pressure level, at 10m distance, unit in a free field on a reflective surface; non-binding value obtained from the sound power level.

4 Sound power on the basis of measurements made in compliance with ISO 9614 and Eurovent 8/1 for Eurovent certified units; in compliance with ISO 3744 for non-certified units.

5 Unit in standard configuration/execution, without optional accessories.



FOCS2/CA Vision 2.0 / SL-CA			1502	1702	1902	1922	2202	2602	2652	2702	2722
Power supply	V/ph/Hz		400/3/50	400/3/50	400/3/50	400/3/50	400/3/50	400/3/50	400/3/50	400/3/50	400/3/50
PERFORMANCE											
COOLING ONLY (GROSS VALUE)											
Cooling capacity	(1) kW		307	348	399	448	508	550	591	617	694
Total power input	(1) kW		96,4	109	125	142	161	174	186	195	218
EER	(1)		3,18	3,19	3,18	3,15	3,16	3,16	3,17	3,17	3,18
ESEER	(1)		4,04	4,27	4,22	4,38	4,08	4,21	4,22	4,30	4,32
COOLING ONLY (EN14511 VALUE)											
Cooling capacity	(1)(2) kW		306	347	398	447	506	549	589	615	691
EER	(1)(2)		3,15	3,16	3,14	3,12	3,12	3,12	3,13	3,13	3,14
ESEER	(1)(2)		3,93	4,13	4,07	4,26	3,96	4,09	4,08	4,15	4,16
Cooling energy class			A	A	A	A	A	A	A	A	A
EXCHANGERS											
HEAT EXCHANGER USER SIDE IN REFRIGERATION											
Water flow	(1) m ³ /h		52,8	60,0	68,7	77,2	87,4	94,7	102	106	119
Pressure drop	(1) kPa		23,9	30,8	40,5	28,1	36,1	33,8	39,0	42,6	42,8
COMPRESSORS											
Compressors nr.	N°		2	2	2	2	2	2	2	2	2
No. Circuits	N°		2	2	2	2	2	2	2	2	2
NOISE LEVEL											
Noise Pressure	(3) dB(A)		55	56	56	57	57	57	58	58	59
Noise Power	(4) dB(A)		87	88	88	89	89	90	91	91	92
SIZE AND WEIGHT											
A	(5) mm		4000	4000	4900	4900	5800	7000	7000	7000	7600
B	(5) mm		2260	2260	2260	2260	2260	2260	2260	2260	2260
H	(5) mm		2500	2500	2500	2500	2500	2500	2500	2500	2500
Operating weight	(5) kg		3940	4110	4460	4690	5700	6130	6300	6460	7360

FOCS2/CA Vision 2.0 / SL-CA			3152	3602	3902	4202	4502	4802	4822	5412	5703
Power supply	V/ph/Hz		400/3/50	400/3/50	400/3/50	400/3/50	400/3/50	400/3/50	400/3/50	400/3/50	400/3/50
PERFORMANCE											
COOLING ONLY (GROSS VALUE)											
Cooling capacity	(1) kW		760	829	883	954	1024	1078	1172	1244	1324
Total power input	(1) kW		238	263	280	300	323	341	372	392	423
EER	(1)		3,19	3,16	3,15	3,18	3,17	3,16	3,15	3,17	3,13
ESEER	(1)		4,21	4,03	4,11	4,21	4,20	4,19	4,33	4,29	4,14
COOLING ONLY (EN14511 VALUE)											
Cooling capacity	(1)(2) kW		757	826	880	950	1021	1074	1168	1241	1322
EER	(1)(2)		3,14	3,11	3,10	3,13	3,13	3,12	3,10	3,13	3,11
ESEER	(1)(2)		4,04	3,91	3,97	4,05	4,06	4,04	4,15	4,16	4,08
Cooling energy class			A	A	A	A	A	A	A	A	A
EXCHANGERS											
HEAT EXCHANGER USER SIDE IN REFRIGERATION											
Water flow	(1) m ³ /h		131	143	152	164	176	186	202	214	228
Pressure drop	(1) kPa		51,3	43,6	49,4	50,9	45,3	50,3	55,7	39,5	20,8
COMPRESSORS											
Compressors nr.	N°		2	2	2	2	2	2	2	2	2
No. Circuits	N°		2	2	2	2	2	2	2	2	3
NOISE LEVEL											
Noise Pressure	(3) dB(A)		59	59	59	60	60	60	60	62	62
Noise Power	(4) dB(A)		92	92	92	93	93	93	93	95	95
SIZE AND WEIGHT											
A	(5) mm		7600	7600	9400	11200	11200	11200	12400	13600	11200
B	(5) mm		2260	2260	2260	2260	2260	2260	2260	2260	2260
H	(5) mm		2500	2500	2500	2500	2500	2500	2500	2500	2500
Operating weight	(5) kg		7860	8260	9270	9950	10260	10380	10940	11680	13510

Notes:

1 Plant (side) cooling exchanger water (in/out) 12°C/7°C; Source (side) heat exchanger air (in) 35°C

2 Values in compliance with EN14511-3:2011

3 Average sound pressure level, at 10m distance, unit in a free field on a reflective surface; non-binding value obtained from the sound power level.

4 Sound power on the basis of measurements made in compliance with ISO 9614 and Eurovent 8/1 for Eurovent certified units; in compliance with ISO 3744 for non-certified units.

5 Unit in standard configuration/execution, without optional accessories.

Technical Data

FOCS2/CA Vision 2.0 / CA-E			1502	1702	1902	1922	2202	2602	2652	2702
Power supply	V/ph/Hz		400/3/50	400/3/50	400/3/50	400/3/50	400/3/50	400/3/50	400/3/50	400/3/50
PERFORMANCE										
COOLING ONLY (GROSS VALUE)										
Cooling capacity	(1) kW		328	368	420	461	542	577	620	655
Total power input	(1) kW		98,5	111	129	141	163	174	188	199
EER	(1)		3,33	3,32	3,27	3,28	3,31	3,32	3,30	3,29
ESEER	(1)		4,14	4,35	4,25	4,43	4,15	4,29	4,26	4,25
COOLING ONLY (EN14511 VALUE)										
Cooling capacity	(1)(2) kW		327	367	419	460	540	575	618	653
EER	(1)(2)		3,29	3,28	3,24	3,25	3,28	3,28	3,26	3,25
ESEER	(1)(2)		4,02	4,21	4,14	4,30	4,03	4,16	4,14	4,11
Cooling energy class			A	A	A	A	A	A	A	A
EXCHANGERS										
HEAT EXCHANGER USER SIDE IN REFRIGERATION										
Water flow	(1) m ³ /h		56,4	63,4	72,3	79,4	93,3	99,3	107	113
Pressure drop	(1) kPa		27,3	34,4	24,7	29,8	32,8	37,2	34,2	38,2
COMPRESSORS										
Compressors nr.	N°		2	2	2	2	2	2	2	2
No. Circuits	N°		2	2	2	2	2	2	2	2
NOISE LEVEL										
Noise Pressure	(3) dB(A)		66	66	67	67	68	67	68	68
Noise Power	(4) dB(A)		98	98	99	99	100	100	101	101
SIZE AND WEIGHT										
A	(5) mm		4000	4000	4900	5800	5800	7000	7000	7600
B	(5) mm		2260	2260	2260	2260	2260	2260	2260	2260
H	(5) mm		2500	2500	2500	2500	2500	2500	2500	2500
Operating weight	(5) kg		3630	3760	4520	5030	5410	5900	6290	6580

FOCS2/CA Vision 2.0 / CA-E			2722	3152	3602	3902	4202	4502	4802	4822
Power supply	V/ph/Hz		400/3/50	400/3/50	400/3/50	400/3/50	400/3/50	400/3/50	400/3/50	400/3/50
PERFORMANCE										
COOLING ONLY (GROSS VALUE)										
Cooling capacity	(1) kW		712	806	877	959	1017	1085	1144	1233
Total power input	(1) kW		216	240	262	284	304	326	347	375
EER	(1)		3,30	3,35	3,34	3,37	3,35	3,33	3,30	3,29
ESEER	(1)		4,41	4,33	4,14	4,26	4,31	4,28	4,22	4,37
COOLING ONLY (EN14511 VALUE)										
Cooling capacity	(1)(2) kW		710	804	875	956	1014	1081	1140	1230
EER	(1)(2)		3,27	3,31	3,30	3,33	3,30	3,28	3,25	3,25
ESEER	(1)(2)		4,29	4,20	4,01	4,14	4,17	4,12	4,06	4,24
Cooling energy class			A	A	A	A	A	A	A	A
EXCHANGERS										
HEAT EXCHANGER USER SIDE IN REFRIGERATION										
Water flow	(1) m ³ /h		123	139	151	165	175	187	197	212
Pressure drop	(1) kPa		32,2	36,4	43,1	37,3	42,0	47,8	53,1	38,7
COMPRESSORS										
Compressors nr.	N°		2	2	2	2	2	2	2	2
No. Circuits	N°		2	2	2	2	2	2	2	2
NOISE LEVEL										
Noise Pressure	(3) dB(A)		68	68	69	69	70	70	70	70
Noise Power	(4) dB(A)		101	101	102	102	103	103	103	103
SIZE AND WEIGHT										
A	(5) mm		7600	8500	9400	10300	11200	11200	11200	12400
B	(5) mm		2260	2260	2260	2260	2260	2260	2260	2260
H	(5) mm		2500	2500	2500	2500	2500	2500	2500	2500
Operating weight	(5) kg		6960	7750	8460	9140	9500	9560	9710	10560

Notes:

1 Plant (side) cooling exchanger water (in/out) 12°C/7°C; Source (side) heat exchanger air (in) 35°C

2 Values in compliance with EN14511-3:2011

3 Average sound pressure level, at 10m distance, unit in a free field on a reflective surface; non-binding value obtained from the sound power level.

4 Sound power on the basis of measurements made in compliance with ISO 9614 and Eurovent 8/1 for Eurovent certified units; in compliance with ISO 3744 for non-certified units.

5 Unit in standard configuration/execution, without optional accessories.

Accessories

- Hydronic group
- VPF (Variable Primary Flow) kit: variable flow pumps with on board regulation
- NOISE REDUCER (only on non-silenced versions)
- Compressor power factor device
- Soft start
- EC fans with electronic DC brushless motor
- Compressor enclosure (standard on silenced versions)
- KIT HT to increase the unit operating conditions range
- Set-up for remote connectivity with ModBus/Echelon protocol cards
- Remote keyboard (distance to 200m and to 500m)



FOCS2/CA Vision 2.0 / SL-CA-E			1502	1702	1902	1922	2202	2602	2652	2702
Power supply	V/ph/Hz		400/3/50	400/3/50	400/3/50	400/3/50	400/3/50	400/3/50	400/3/50	400/3/50
PERFORMANCE										
COOLING ONLY (GROSS VALUE)										
Cooling capacity	(1) kW		316	363	410	455	529	563	604	643
Total power input	(1) kW		96,4	108	123	138	158	171	182	190
EER	(1)		3,27	3,36	3,33	3,29	3,35	3,30	3,32	3,38
ESEER	(1)		4,15	4,32	4,36	4,38	4,25	4,26	4,28	4,36
COOLING ONLY (EN14511 VALUE)										
Cooling capacity	(1)(2) kW		315	362	410	454	528	562	602	641
EER	(1)(2)		3,24	3,32	3,29	3,26	3,31	3,26	3,28	3,34
ESEER	(1)(2)		4,04	4,17	4,25	4,26	4,13	4,13	4,16	4,22
Cooling energy class			A	A	A	A	A	A	A	A
EXCHANGERS										
HEAT EXCHANGER USER SIDE IN REFRIGERATION										
Water flow	(1) m ³ /h		54,3	62,5	70,7	78,4	91,1	97,0	104	111
Pressure drop	(1) kPa		25,3	33,4	23,6	29,0	31,3	35,5	32,4	36,8
COMPRESSORS										
Compressors nr.	N°		2	2	2	2	2	2	2	2
No. Circuits	N°		2	2	2	2	2	2	2	2
NOISE LEVEL										
Noise Pressure	(3) dB(A)		55	56	56	57	56	57	58	58
Noise Power	(4) dB(A)		87	88	88	89	89	90	91	91
SIZE AND WEIGHT										
A	(5) mm		4000	4900	5800	5800	7000	7000	7600	7600
B	(5) mm		2260	2260	2260	2260	2260	2260	2260	2260
H	(5) mm		2500	2500	2500	2500	2500	2500	2500	2500
Operating weight	(5) kg		3970	4440	5210	5470	6080	6360	6910	7250

FOCS2/CA Vision 2.0 / SL-CA-E			2722	3152	3602	3902	4202	4502	4802	4822
Power supply	V/ph/Hz		400/3/50	400/3/50	400/3/50	400/3/50	400/3/50	400/3/50	400/3/50	400/3/50
PERFORMANCE										
COOLING ONLY (GROSS VALUE)										
Cooling capacity	(1) kW		710	794	859	938	996	1061	1109	1217
Total power input	(1) kW		212	236	259	281	300	319	341	368
EER	(1)		3,35	3,36	3,32	3,34	3,32	3,33	3,25	3,31
ESEER	(1)		4,34	4,29	4,12	4,24	4,28	4,32	4,27	4,39
COOLING ONLY (EN14511 VALUE)										
Cooling capacity	(1)(2) kW		709	792	857	936	993	1058	1105	1214
EER	(1)(2)		3,32	3,32	3,27	3,30	3,28	3,28	3,20	3,27
ESEER	(1)(2)		4,22	4,16	3,99	4,12	4,14	4,17	4,11	4,26
Cooling energy class			A	A	A	A	A	A	A	A
EXCHANGERS										
HEAT EXCHANGER USER SIDE IN REFRIGERATION										
Water flow	(1) m ³ /h		122	137	148	161	171	183	191	209
Pressure drop	(1) kPa		32,0	35,3	41,4	35,7	40,3	45,7	49,9	37,7
COMPRESSORS										
Compressors nr.	N°		2	2	2	2	2	2	2	2
No. Circuits	N°		2	2	2	2	2	2	2	2
NOISE LEVEL										
Noise Pressure	(3) dB(A)		59	59	59	59	60	60	60	61
Noise Power	(4) dB(A)		92	92	92	92	93	93	93	94
A	(5) mm		9400	9400	9400	10300	11200	12400	12400	13600
B	(5) mm		2260	2260	2260	2260	2260	2260	2260	2260
H	(5) mm		2500	2500	2500	2500	2500	2500	2500	2500
Operating weight	(5) kg		8390	8810	9240	9930	10300	10710	10800	11660

Notes:

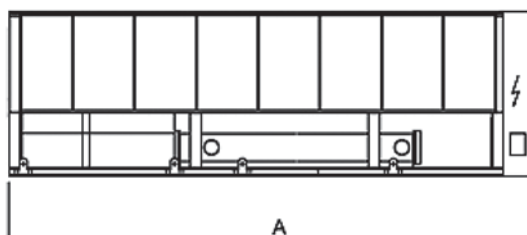
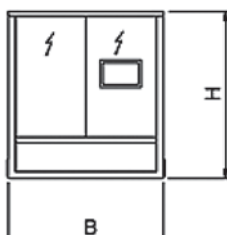
1 Plant (side) cooling exchanger water (in/out) 12°C/7°C; Source (side) heat exchanger air (in) 35°C

2 Values in compliance with EN14511-3:2011

3 Average sound pressure level, at 10m distance, unit in a free field on a reflective surface; non-binding value obtained from the sound power level.

4 Sound power on the basis of measurements made in compliance with ISO 9614 and Eurovent 8/1 for Eurovent certified units; in compliance with ISO 3744 for non-certified units.

5 Unit in standard configuration/execution, without optional accessories.



Technical Data

FOCS2/K Vision 2.0 / K			1502	1702	1902	1922	2202	2652	2702	2722	3152	3602	3902	4202
Power supply	V/ph/Hz		400/3/50											
PERFORMANCE														
COOLING ONLY (GROSS VALUE)														
Cooling capacity	(1)	kW	308	343	385	434	495	563	599	666	736	794	848	917
Total power input	(1)	kW	102	113	131	147	173	202	212	235	255	280	303	324
EER	(1)		3,02	3,03	2,93	2,94	2,85	2,78	2,83	2,83	2,89	2,84	2,80	2,83
ESEER	(1)		3,84	4,13	4,14	4,12	3,80	3,96	4,04	4,19	4,00	3,85	3,85	3,99
COOLING ONLY (EN14511 VALUE)														
Cooling capacity	(1)(2)	kW	307	342	384	432	493	561	597	664	733	792	846	914
EER	(1)(2)		2,99	2,99	2,89	2,90	2,82	2,75	2,80	2,79	2,85	2,81	2,76	2,80
ESEER	(1)(2)		3,74	4,02	4,01	3,95	3,70	3,85	3,91	4,05	3,86	3,74	3,72	3,86
Cooling energy class			B	B	C	B	C	C	C	C	C	C	C	C
EXCHANGERS														
HEAT EXCHANGER USER SIDE IN REFRIGERATION														
Water flow	(1)	m ³ /h	53,0	59,0	66,2	74,7	85,2	96,9	103	115	127	137	146	158
Pressure drop	(1)	kPa	24,1	29,9	37,6	47,8	34,3	35,4	40,1	39,4	48,1	40,0	45,6	47,1
COMPRESSORS														
Compressors nr.	N°		2	2	2	2	2	2	2	2	2	2	2	2
No. Circuits	N°		2	2	2	2	2	2	2	2	2	2	2	2
NOISE LEVEL														
Noise Pressure	(3)	dB(A)	67	67	67	68	68	68	68	70	70	70	70	70
Noise Power	(4)	dB(A)	99	99	99	100	100	100	100	102	102	102	103	103
SIZE AND WEIGHT														
A	(5)	mm	4000	4000	4000	4000	4900	4900	4900	5800	5800	5800	7000	7000
B	(5)	mm	2260	2260	2260	2260	2260	2260	2260	2260	2260	2260	2260	2260
H	(5)	mm	2500	2500	2500	2500	2500	2500	2500	2500	2500	2500	2500	2500
Operating weight	(5)	kg	3480	3500	3510	3630	4730	4870	4960	5680	6170	6560	7010	7220

FOCS2/K Vision 2.0 / K			4502	4802	4822	5412	6002	6022	6303	6903	7203	7213	7223	8404
Power supply	V/ph/Hz		400/3/50											
PERFORMANCE														
COOLING ONLY (GROSS VALUE)														
Cooling capacity	(1)	kW	989	1051	1134	1213	1244	1328	1398	1495	1616	1681	1741	1818
Total power input	(1)	kW	344	357	399	418	444	465	478	532	542	580	604	672
EER	(1)		2,87	2,94	2,84	2,90	2,80	2,85	2,92	2,81	2,98	2,90	2,88	2,70
ESEER	(1)													
COOLING ONLY (EN14511 VALUE)														
Cooling capacity	(1)(2)	kW	986	1047	1130	1210	1241	1324	1394	1490	1611	1675	1734	1812
EER	(1)(2)		2,84	2,90	2,80	2,87	2,78	2,82	2,89	2,77	2,95	2,86	2,84	2,67
ESEER	(1)(2)		3,85	3,94	3,98	4,00	3,92	4,08	3,86	3,81	4,01	4,01	4,03	3,85
Cooling energy class			C	B	C	C	C	C	C	C	B	C	C	D
EXCHANGERS														
HEAT EXCHANGER USER SIDE IN REFRIGERATION														
Water flow	(1)	m ³ /h	170	181	195	209	214	229	241	257	278	289	300	313
Pressure drop	(1)	kPa	42,4	47,8	52,2	37,5	39,4	45,0	45,2	51,7	46,5	50,3	58,4	49,9
COMPRESSORS														
Compressors nr.	N°		2	2	2	2	2	2	3	3	3	3	3	4
No. Circuits	N°		2	2	2	2	2	2	3	3	3	3	3	4
NOISE LEVEL														
Noise Pressure	(3)	dB(A)	71	71	71	73	73	73	73	73	73	73	73	73
Noise Power	(4)	dB(A)	104	104	104	106	106	106	106	106	106	106	106	106
SIZE AND WEIGHT														
A	(5)	mm	7600	7600	7600	9400	9400	11200	11200	11200	11200	11200	11200	12400
B	(5)	mm	2260	2260	2260	2260	2260	2260	2260	2260	2260	2260	2260	2260
H	(5)	mm	2500	2500	2500	2500	2500	2500	2500	2500	2500	2500	2500	2500
Operating weight	(5)	kg	7860	8030	8090	9290	9380	10040	11440	11780	12350	12420	12480	13650

Accessories

- Hydronic group
- VPF (Variable Primary Flow) kit: variable flow pumps with on board regulation
- NOISE REDUCER (only on non-silenced versions)
- Compressor power factor device
- Soft start
- EC fans with electronic DC brushless motor
- Compressor enclosure (standard on silenced versions)
- KIT HT to increase the unit operating conditions range
- Set-up for remote connectivity with ModBus/Echelon protocol cards
- Remote keyboard (distance to 200m and to 500m)

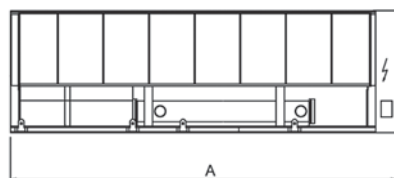
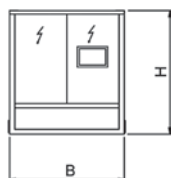


FOCS2/K Vision 2.0 / SL-K			1502	1702	1902	1922	2202	2652	2702	2722	3152	3602	3902	4202
Power supply	V/ph/Hz		400/3/50											
PERFORMANCE														
COOLING ONLY (GROSS VALUE)														
Cooling capacity	(1)	kW	295	325	378	425	486	558	592	662	727	782	847	906
Total power input	(1)	kW	98,3	116	131	147	169	198	208	231	251	276	290	318
EER	(1)		3,00	2,82	2,88	2,89	2,88	2,82	2,85	2,86	2,90	2,83	2,92	2,85
ESEER	(1)		4,08	4,10	4,12	4,30	3,99	4,09	4,14	4,32	4,09	3,87	4,00	4,04
COOLING ONLY (EN14511 VALUE)														
Cooling capacity	(1)(2)	kW	294	325	376	424	484	557	591	660	724	780	844	902
EER	(1)(2)		2,97	2,79	2,84	2,85	2,85	2,79	2,81	2,83	2,86	2,80	2,88	2,81
ESEER	(1)(2)		3,98	3,99	3,98	4,12	3,88	3,97	4,01	4,18	3,95	3,76	3,87	3,91
Cooling energy class			B	C	C	C	C	C	C	C	C	C	C	C
EXCHANGERS														
HEAT EXCHANGER USER SIDE IN REFRIGERATION														
Water flow	(1)	m ³ /h	50,8	56,0	65,0	73,2	83,6	96,1	102	114	125	135	146	156
Pressure drop	(1)	kPa	22,1	26,9	36,2	45,9	33,0	34,8	39,2	39,0	46,9	38,8	45,5	45,9
COMPRESSORS														
Compressors nr.	N°		2	2	2	2	2	2	2	2	2	2	2	2
No. Circuits	N°		2	2	2	2	2	2	2	2	2	2	2	2
NOISE LEVEL														
Noise Pressure	(3)	dB(A)	55	55	56	56	57	57	58	57	58	58	59	59
Noise Power	(4)	dB(A)	87	87	88	88	89	89	90	90	91	91	92	92
SIZE AND WEIGHT														
A	(5)	mm	4000	4000	4000	4000	4900	5800	5800	7000	7000	7000	7600	7600
B	(5)	mm	2260	2260	2260	2260	2260	2260	2260	2260	2260	2260	2260	2260
H	(5)	mm	2500	2500	2500	2500	2500	2500	2500	2500	2500	2500	2500	2500
Operating weight	(5)	kg	3870	3890	3970	4230	5340	5700	5810	6520	7190	7590	7950	8370

FOCS2/K Vision 2.0 / SL-K			4502	4802	4822	5412	6002	6022	6303	6903	7203	7213	7223	8404
Power supply	V/ph/Hz		400/3/50											
PERFORMANCE														
COOLING ONLY (GROSS VALUE)														
Cooling capacity	(1)	kW	992	1033	1140	1176	1231	1293	1359	1461	1531	1598	1654	1762
Total power input	(1)	kW	336	361	392	420	436	472	476	528	561	608	637	682
EER	(1)		2,96	2,86	2,91	2,80	2,82	2,74	2,86	2,77	2,73	2,63	2,59	2,58
ESEER	(1)		4,12	4,05	4,26	4,16	4,11	4,19	4,05	4,02	4,01	4,03	4,07	3,92
COOLING ONLY (EN14511 VALUE)														
Cooling capacity	(1)(2)	kW	989	1030	1136	1173	1228	1289	1355	1456	1527	1593	1648	1757
EER	(1)(2)		2,92	2,82	2,87	2,77	2,79	2,71	2,83	2,73	2,70	2,60	2,56	2,55
ESEER	(1)(2)		3,99	3,91	4,09	4,06	4,00	4,05	3,93	3,88	3,89	3,89	3,91	3,77
Cooling energy class			B	C	C	C	C	C	C	C	C	D	D	D
EXCHANGERS														
HEAT EXCHANGER USER SIDE IN REFRIGERATION														
Water flow	(1)	m ³ /h	171	178	196	202	212	223	234	251	264	275	285	303
Pressure drop	(1)	kPa	42,6	46,1	52,8	35,2	38,6	42,6	42,7	49,3	41,7	45,4	52,7	46,9
COMPRESSORS														
Compressors nr.	N°		2	2	2	2	2	2	3	3	3	3	3	4
No. Circuits	N°		2	2	2	2	2	2	3	3	3	3	3	4
NOISE LEVEL														
Noise Pressure	(3)	dB(A)	60	60	61	61	61	61	61	61	61	61	62	63
Noise Power	(4)	dB(A)	93	93	94	94	94	94	94	94	94	94	95	96
SIZE AND WEIGHT														
A	(5)	mm	9400	9400	11200	11200	11200	11200	11200	11200	11200	11200	11200	13600
B	(5)	mm	2260	2260	2260	2260	2260	2260	2260	2260	2260	2260	2260	2260
H	(5)	mm	2500	2500	2500	2500	2500	2500	2500	2500	2500	2500	2500	2500
Operating weight	(5)	kg	9530	9550	10120	10590	10830	10990	12830	12880	13390	13430	13470	15230

Notes:

- 1) Plant (side) cooling exchanger water (in/out) 12°C/7°C; Source (side) heat exchanger air (in) 35°C
- 2) Values in compliance with EN14511-3:2011
- 3) Average sound pressure level, at 10m distance, unit in a free field on a reflective surface; non-binding value obtained from the sound power level.
- 4) Sound power on the basis of measurements made in compliance with ISO 9614 and Eurovent 8/1 for Eurovent certified units; in compliance with ISO 3744 for non-certified units.
- 5) Unit in standard configuration/execution, without optional accessories.



More than 1000 projects all over the world

WEIZMANN INSTITUTE OF SCIENCE

2012 Rehovot
(Israel)

Hydronic system

Cooling capacity:
7345 kW

Installed machines:
5x FOCS2/CA 6303



SAAR-GALERIE - SAARBRÜCKEN

2008 Germany
(Saarbrücken)

Application:
Shopping Centre

Cooling capacity:
700 kW

Installed machines:
2x FOCS-CA/LN 2722



LISBON AIRPORT

2009 Portugal
(Lisbon)

Cooling capacity: 11970 kW

Heating capacity: 840 kW

Installed machines:
2x FOCS-CA/B 4822,
2x RECS/LT 1962,
1x FOCS-CA/B 4822,
6x FOCS-CA/LN 5403



RIVER OUEST

2010 Bezons (France)

Cooling capacity: 6000 kW

Installed machines: 5x FOCS-CA/SL,
5 TECS-F/SL, controlled by 5 group
device MANAGER 3000

Investor: HRO Howard Ranson
Organisation

Designer: COSENTINI Associates
AND Green Affairs



FRENCH EMBASSY

2012 India
(New Delhi)

Application:
Institutions

Cooling capacity:
1401 kW

Installed machines:
2x FOCS-CA/SL 2702,
2x NX/SL-CA 0702



200 ALDERSGATE STREET

2007 London
(Great Britain)

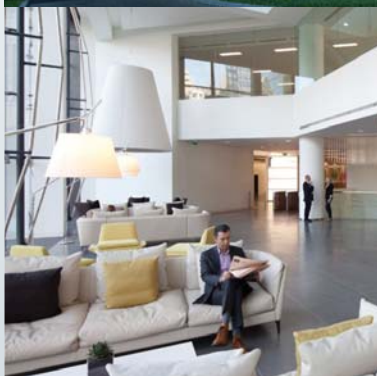
Cooling capacity: 5149 kW

Installed machines:
3x FOCS-CA/LN, 2x FOCS-CA/SL

Investor: Mitie Engineering

Architect: Morey Smith

Designer: Grontm



Every project is characterised by different usage conditions and system specifications for many different latitudes. All these projects share high energy efficiency, maximum integration and total reliability due to the unique Climaveneta experience.



PLANETA SHOPPING & LEISURE CENTR
2012 Ufa (Russia)

Cooling capacity: 10000 kW

Installed machines: 4x FOCS-FC/B, 4x FOCS2/K, 1x MANAGER 3000



CLEMENT ADER INSTITUTE
2012 Toulouse (France)

Plant type: Hydronic System

Cooling capacity: 5288 kW

Installed machines: 3x NECS/SL-CA/S, 3x FOCS2/K/R/S, 2x FOCS2/K/S

Investor: Université de Toulouse

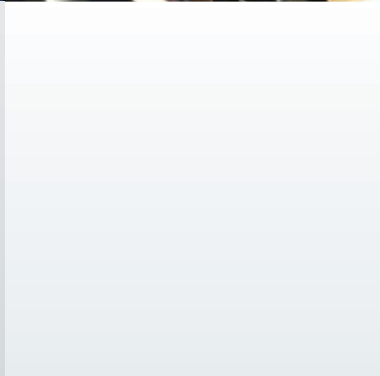
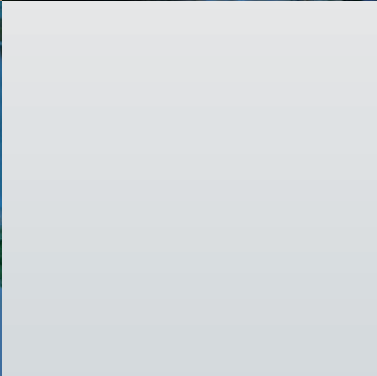


SHOPPING CENTRE TOOWOMBA
2010 Australia (Toowoomba)

Application: Shopping Centre

Cooling capacity: 2000 kW

Installed machines: 2x FOCS-CA 4802



IKEA STORE
2007 Italy (Chieti)

Application: Store

Cooling capacity: 1877 kW

Installed machines: 1x FOCS-CA/B 2601, 1x RECS/B S 1152, 2x FOCS-N/CA S 2422

MASSIMO DUTTI HEADQUARTERS
2013 Tordera (Spain)

Cooling capacity: 1558,4 kW

Heating capacity: 476,2 kW

Installed machines: 2x FOCS2/SL-CA-E, 1x ERACS2-Q/XL-CA

Investor: Inditex



A Group Company of **MITSUBISHI ELECTRIC**

Climaveneta S.p.A.

Via Sarson 57/c
36061 Bassano del Grappa (VI)
Italy
Tel +39 0424 509 500
Fax +39 0424 509 509
info@climaveneta.com
www.climaveneta.com

Subsidiaries

France

www.climaveneta.fr

Spain

www.climaveneta.es

Poland

www.climaveneta.pl

Germany

www.climaveneta.de

Great Britain

www.climaveneta.co.uk

Russia

ru.climaveneta.com

China

www.climaveneta.com.cn

India

www.climaveneta.in

Middle East

ae.climaveneta.com

Southeast Asia

www.climaveneta.com

Hong Kong

www.climaveneta.com



For more information:

www.climaveneta.com