

ASM MODULAR SYSTEMS

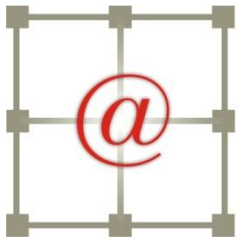
ASM Modular Systems

Innovations in Access Floor

9500

Juan House

Regional Sales Manager



ASM
innovations in access flooring

Product Overview

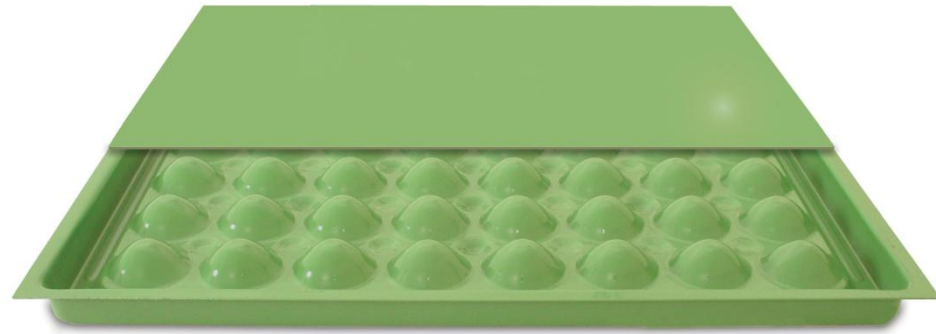


Office Spaces

FS-Series (Filled Steel)

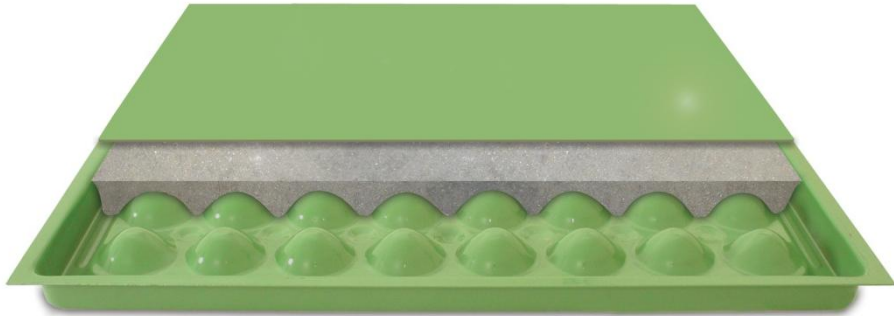


S-Series (Hollow Steel)

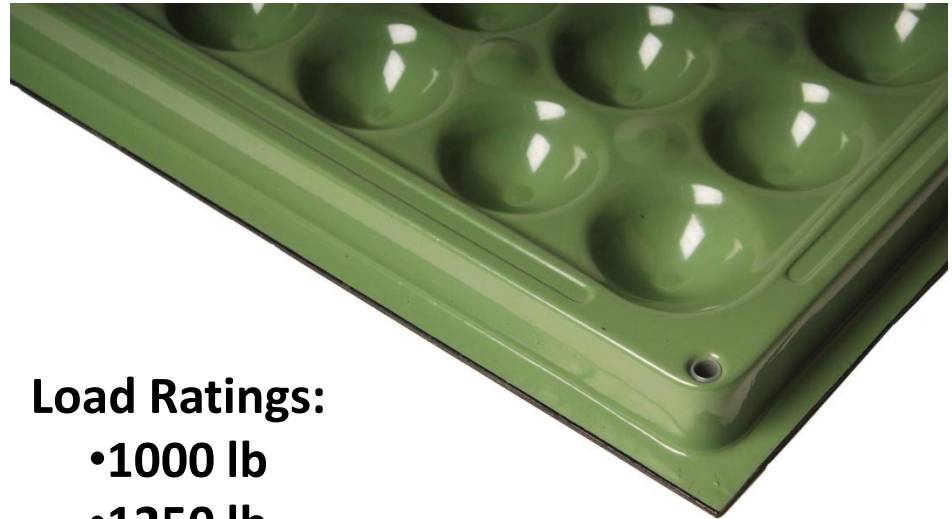


FS-Series

**Cold Rolled Top Sheet & Die-formed
bottom, Fully Welded, Concrete
Filled Steel Panel**



**Full Corner Design with reverse
embossments on underside and
ribbed beams for added strength.**

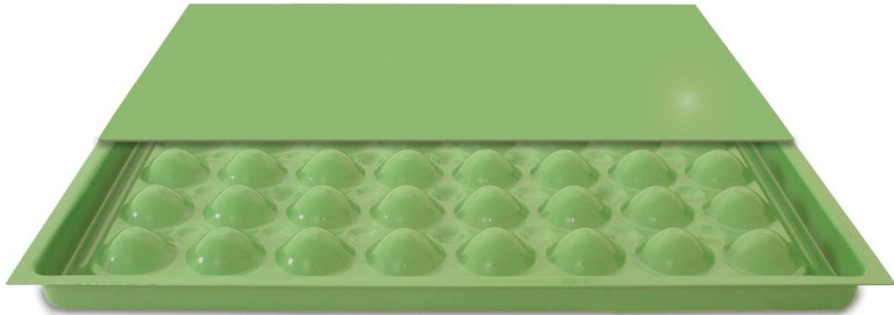


Load Ratings:

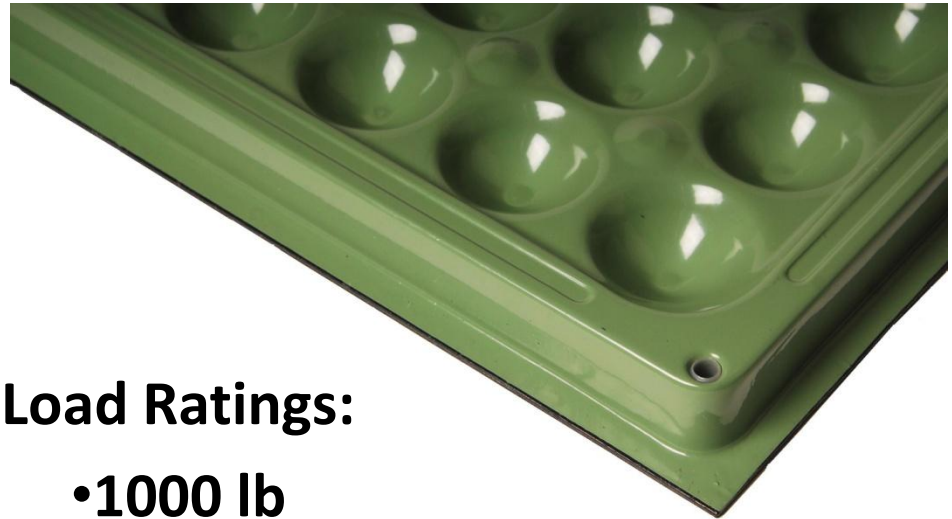
- 1000 lb
- 1250 lb
- 1500 lb
- 2000 lb
- 2500 lb

S-Series

Cold Rolled Top Sheet & Die-formed bottom, Fully Welded, Hollow Steel Panel



Full Corner Design with reverse embossments on underside and ribbed beams for added strength.



Load Ratings:

- 1000 lb
- 1250 lb
- 1500 lb

Quick-Loc Pedestal System



Three levels of Support

1. Flange Support
2. Corner Support
3. Locking Support with Arm & Fastener

Panel locates & aligns to “capturing” Quick-Loc Head for quicker installation.

Solid feel and quiet under foot.

Stamped and formed from one piece of steel for strength .

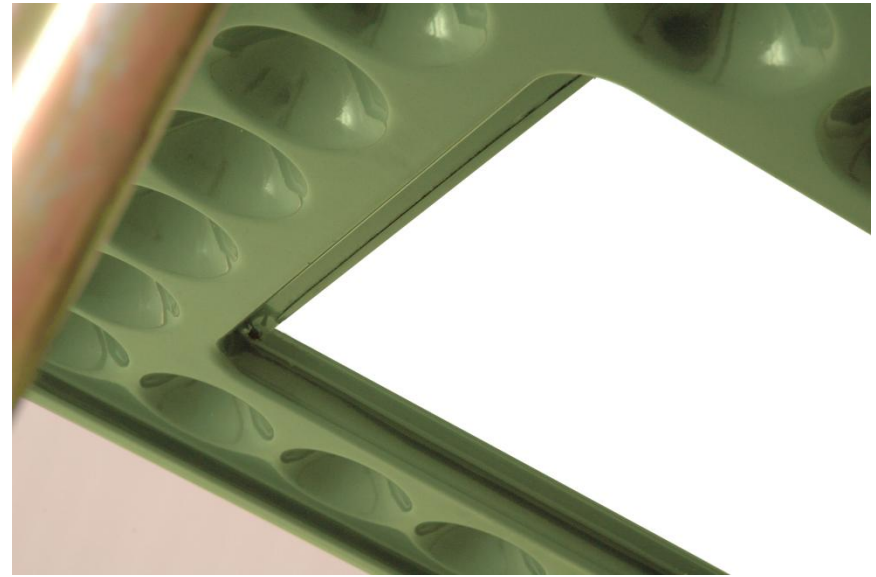
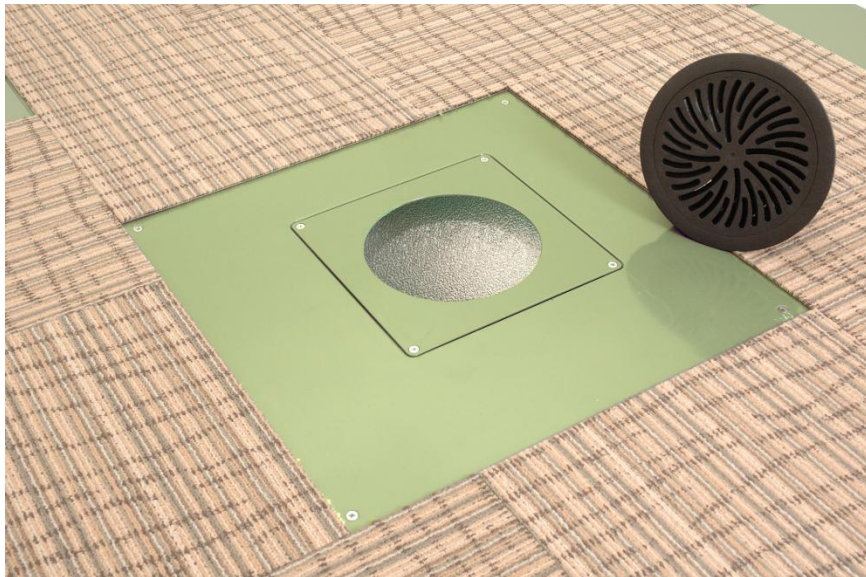
Utility Panel

Fully Welded Concrete Filled Panel

Multiple Inserts for various applications

Eliminates dusting and onsite cutting

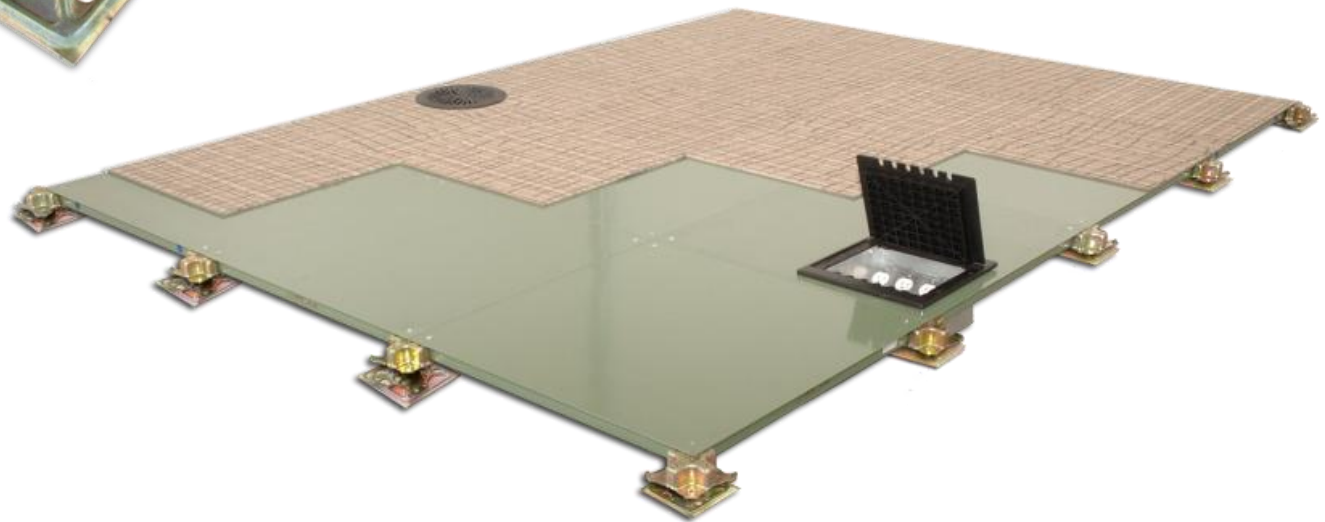
Clean & efficient way to handle floor penetrations



Low Profile Systems



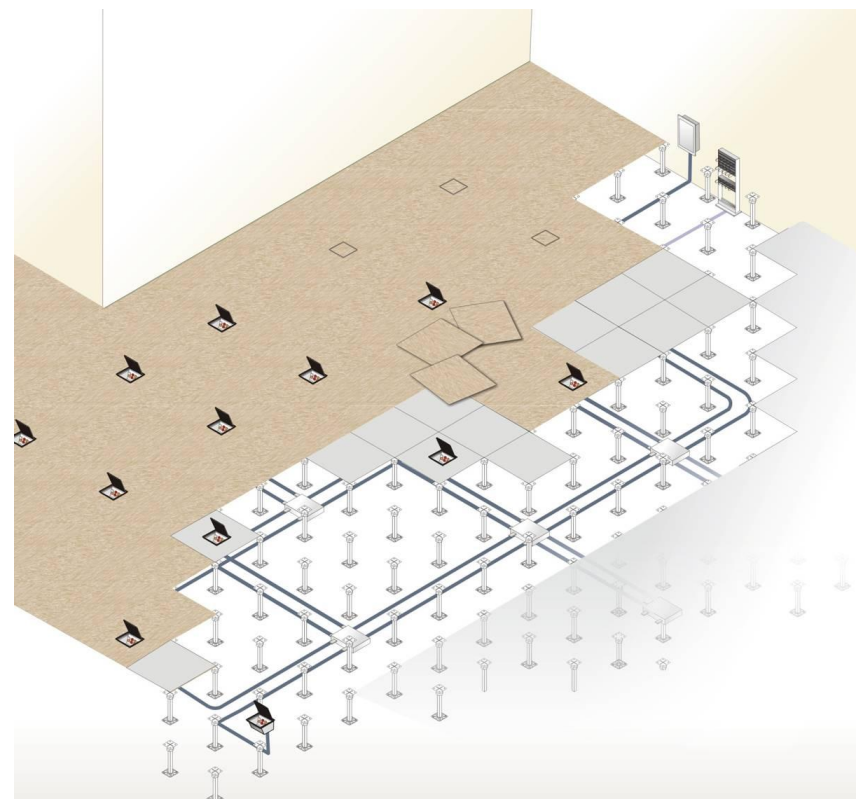
- Retrofit in existing buildings where ceiling height is an issue.
- As low as 2.5 inches
- Fully level Steel System
- Ideal for small office V/D mgt.



Modular Wiring (V/D)



- **Plug & Play System**
- **Allows flexibility with office churn.**
- **Allows more options for the owner and ability to expand if necessary.**
- **Allows schematic layout of power & voice.**

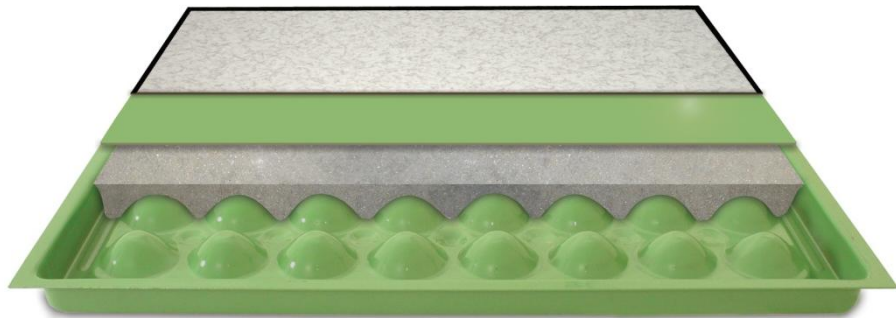


Office Space Accessory Items

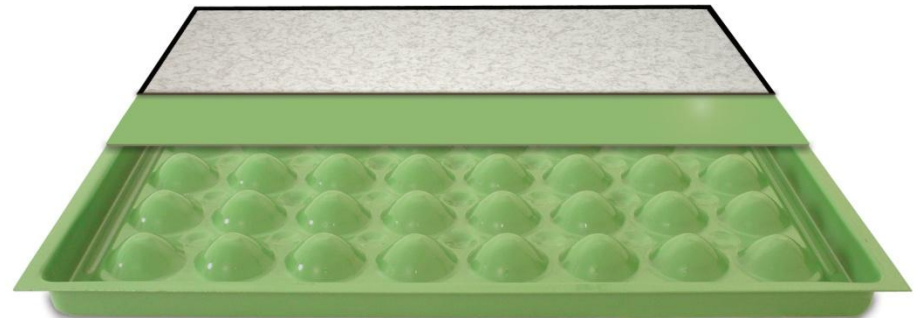


Data Center System

FS-Series (Filled Steel)
with factory applied finish

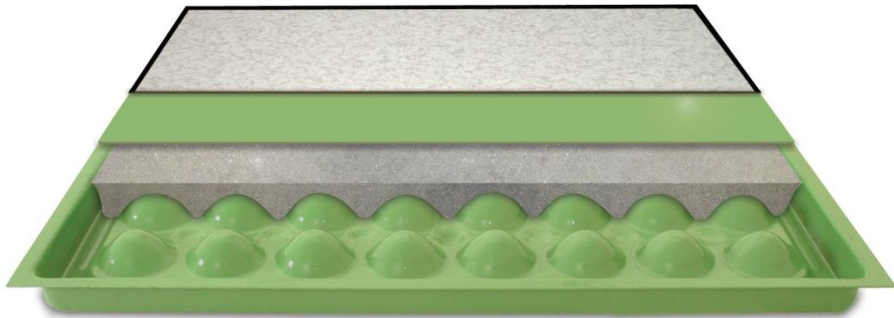


S-Series (Hollow Steel)
With factory applied finish



FS-Series

**Cold Rolled Top Sheet & Die-formed
bottom, Fully Welded, Concrete
Filled Steel Panel**



**Full Corner Design with reverse
embossments on underside and
ribbed beams for added strength.**

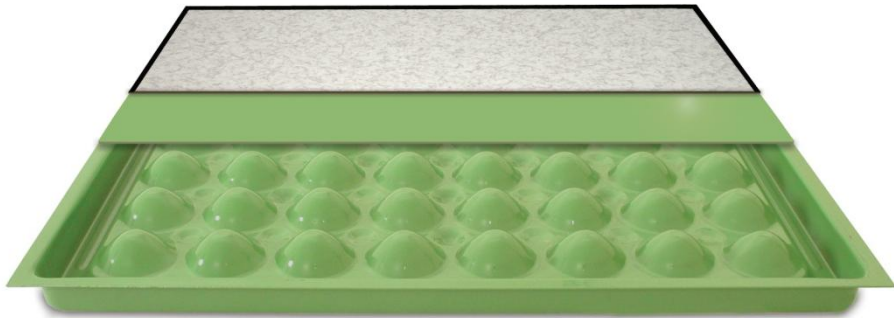


Load Ratings:

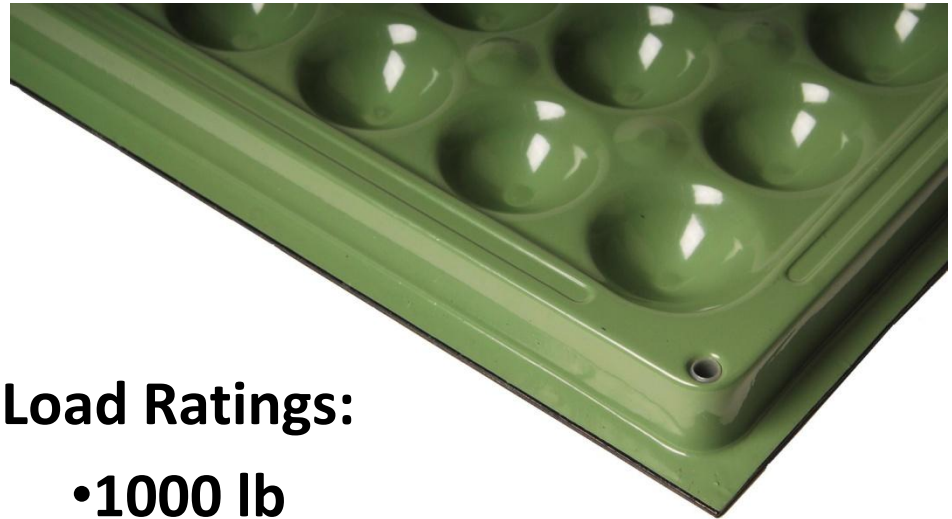
- 1000 lb
- 1250 lb
- 1500 lb
- 2000 lb
- 2500 lb

S-Series

Cold Rolled Top Sheet & Die-formed bottom, Fully Welded, Hollow Steel Panel



Full Corner Design with reverse embossments on underside and ribbed beams for added strength.



Load Ratings:

- 1000 lb
- 1250 lb
- 1500 lb

Nickel Chrome Heads



DC Pedestal Systems

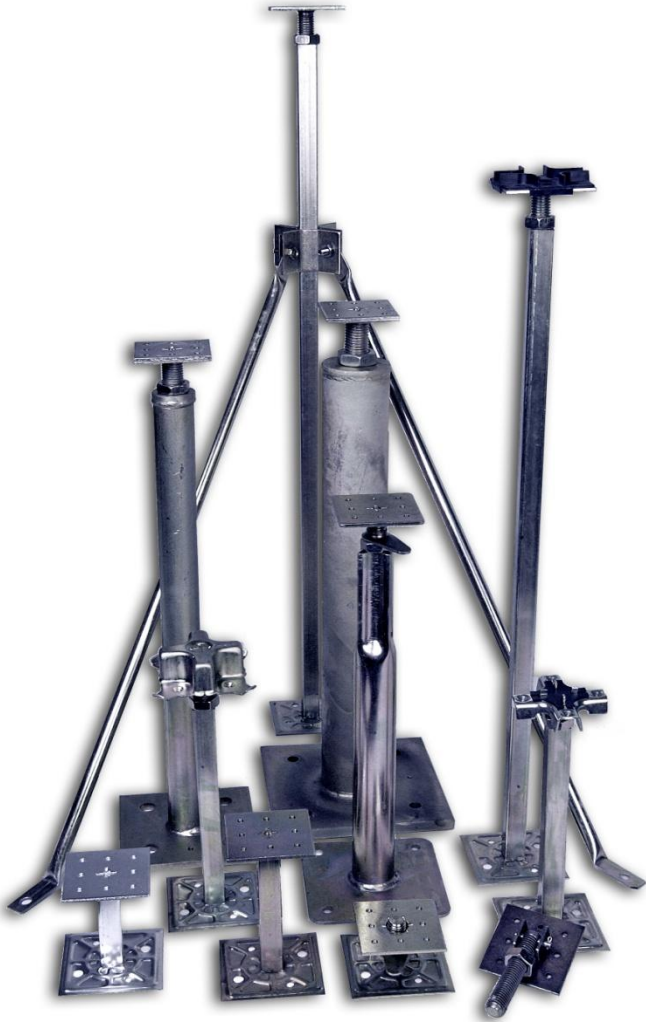
Hot Dipped Galvanized (HDG) Pedestal Bases

Rigid Grid System



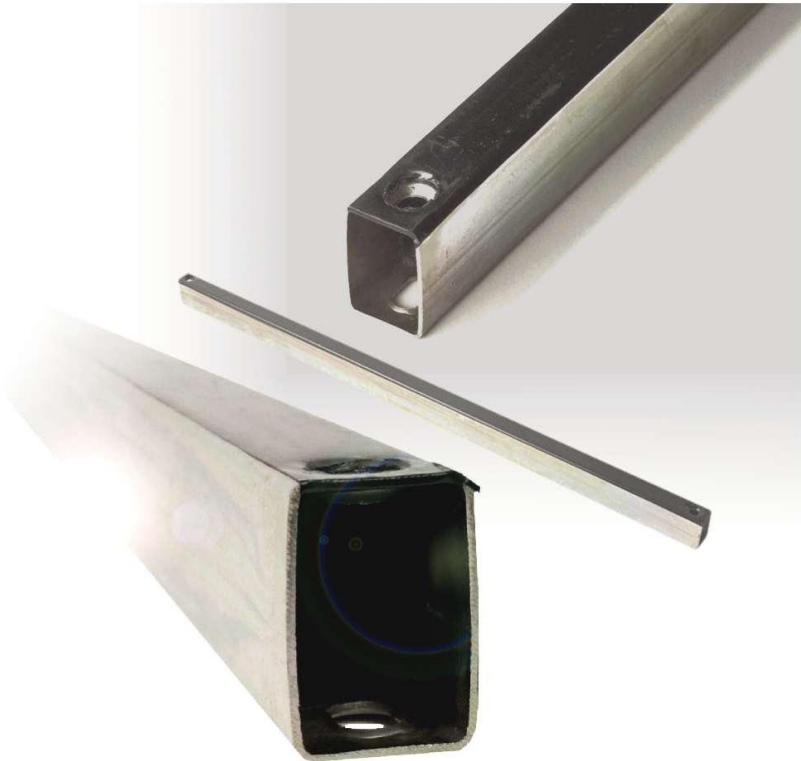
Heavy Duty Seismic Pedestals

Pedestals for all applications from heavy equipment to continuous rolling loads



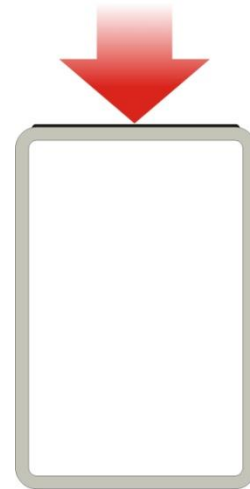
Stringers

Full Box Shaped Stringers

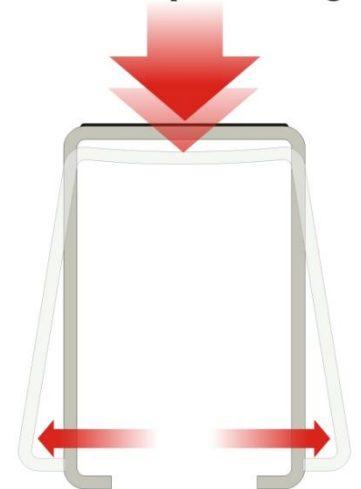


Competitors Systems

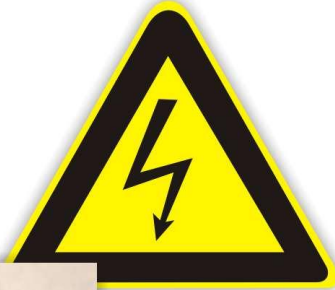
ASM's unique new solid tube design



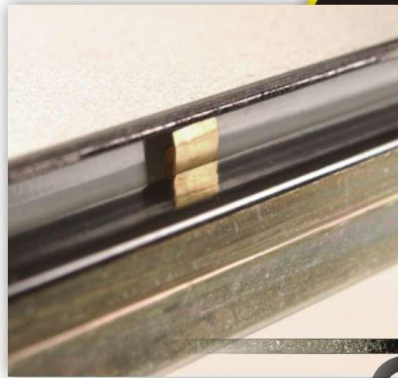
Conventional U-shaped stringer



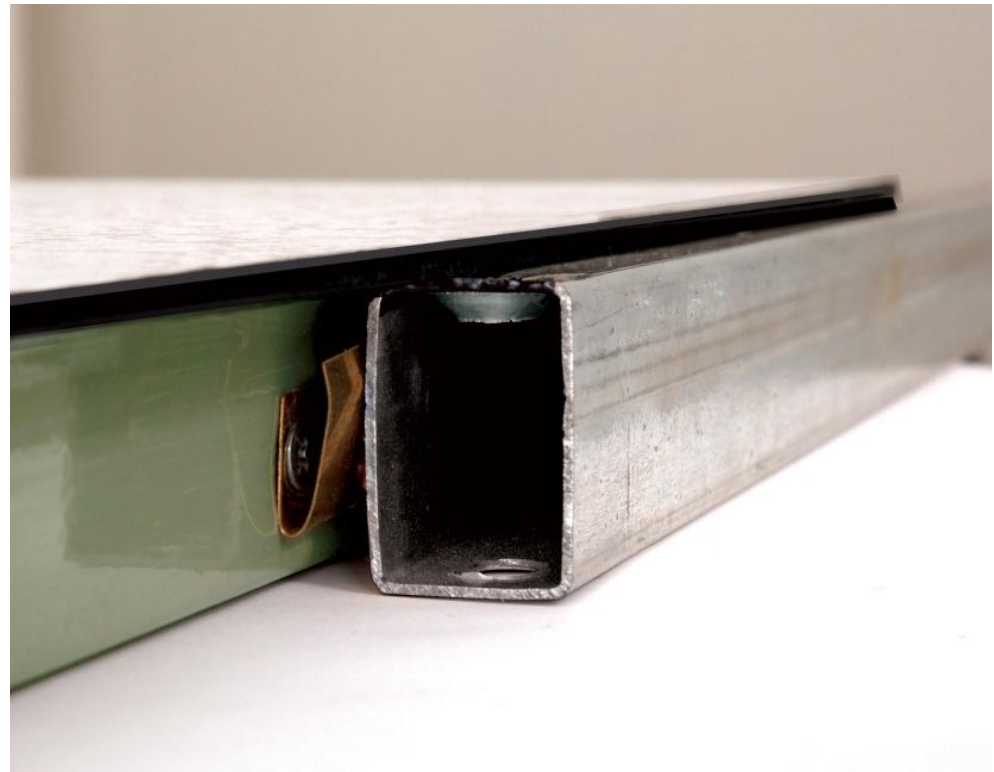
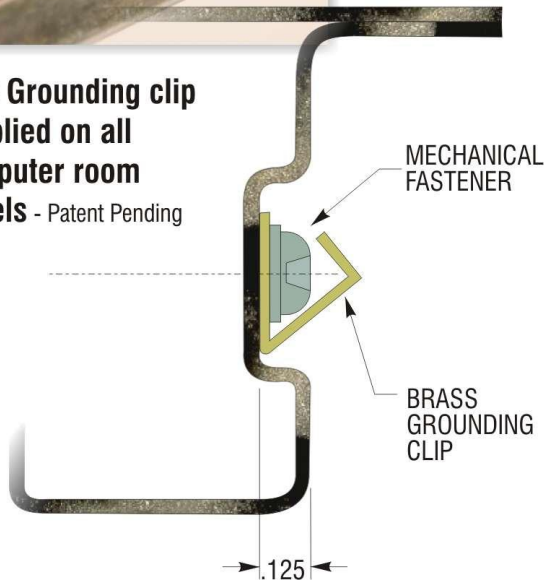
Positive Ground Device (PGD)



PGD Clip ensures positive grounding from floor panel to stringer which then attaches to the pedestal and on to building ground.



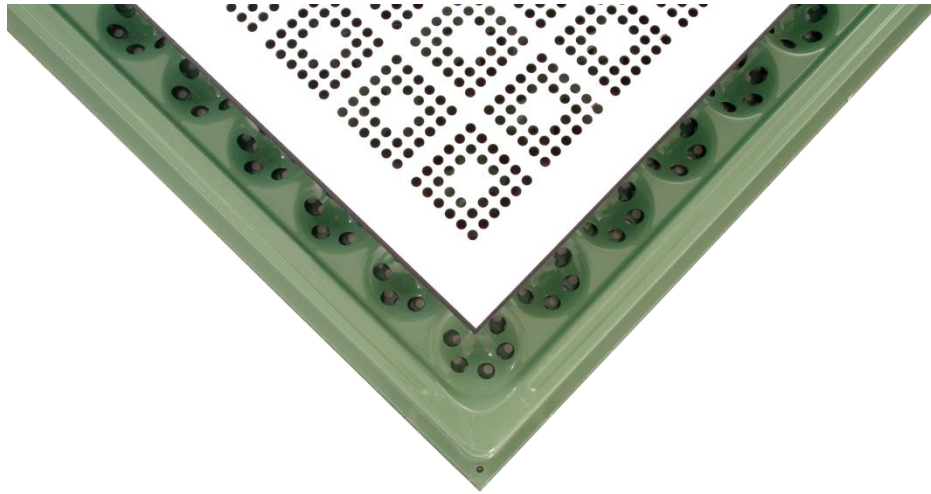
**PGD Grounding clip
supplied on all
computer room
panels - Patent Pending**



Air Flow Panels

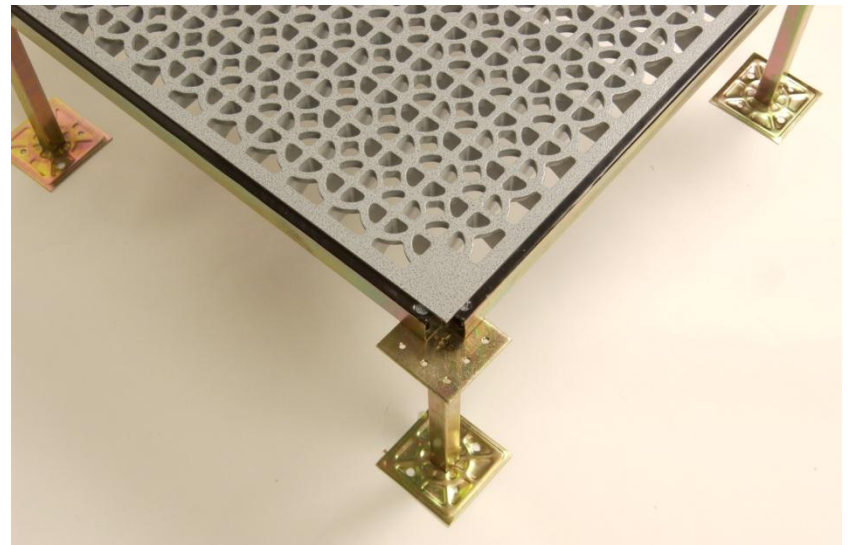
for data center applications

AF200 Steel Perforated Panel



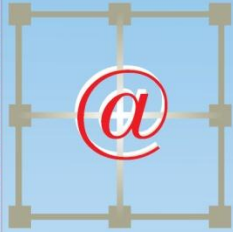
- *25% open area, standard flow**
- *Standard load rating**

AF500 Aluminum Air Grate



- *56% open area, high flow**
- *Heavy-duty load rating**

Cooling the Data Center



ASM

innovations in access flooring

is a member of

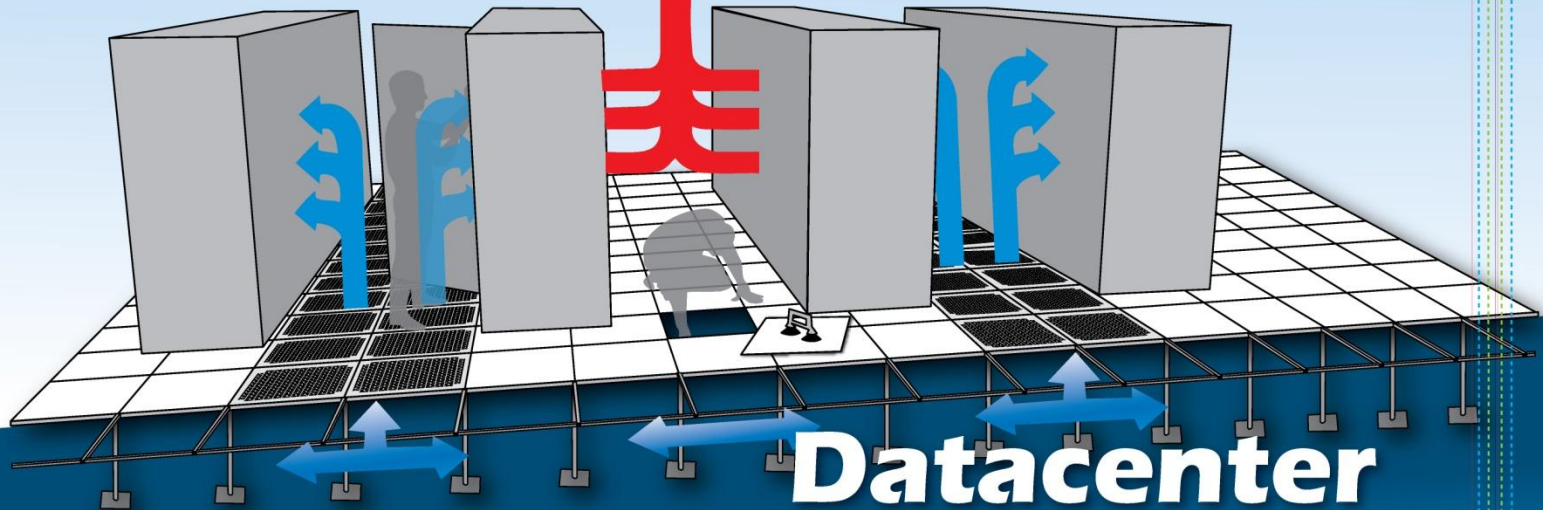
Kingspan®

Group plc

Cold Aisle

Hot Aisle

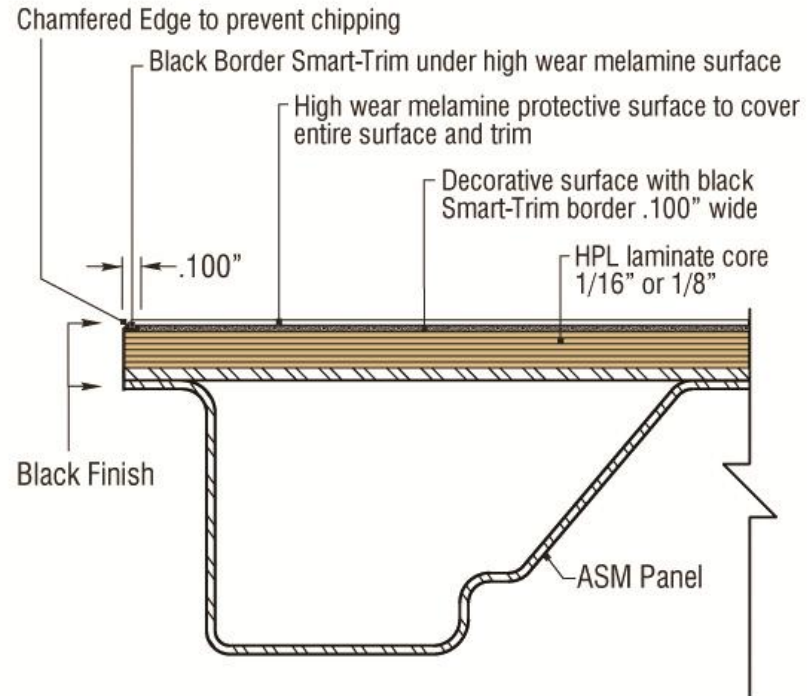
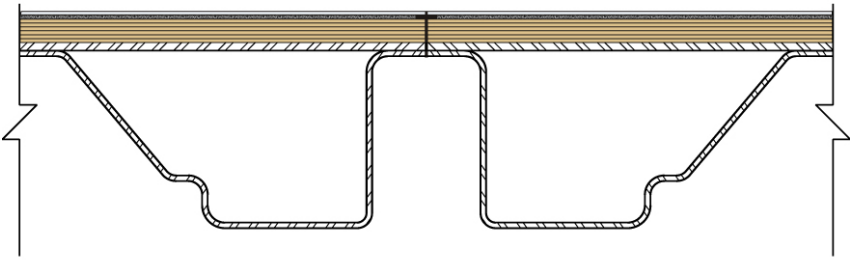
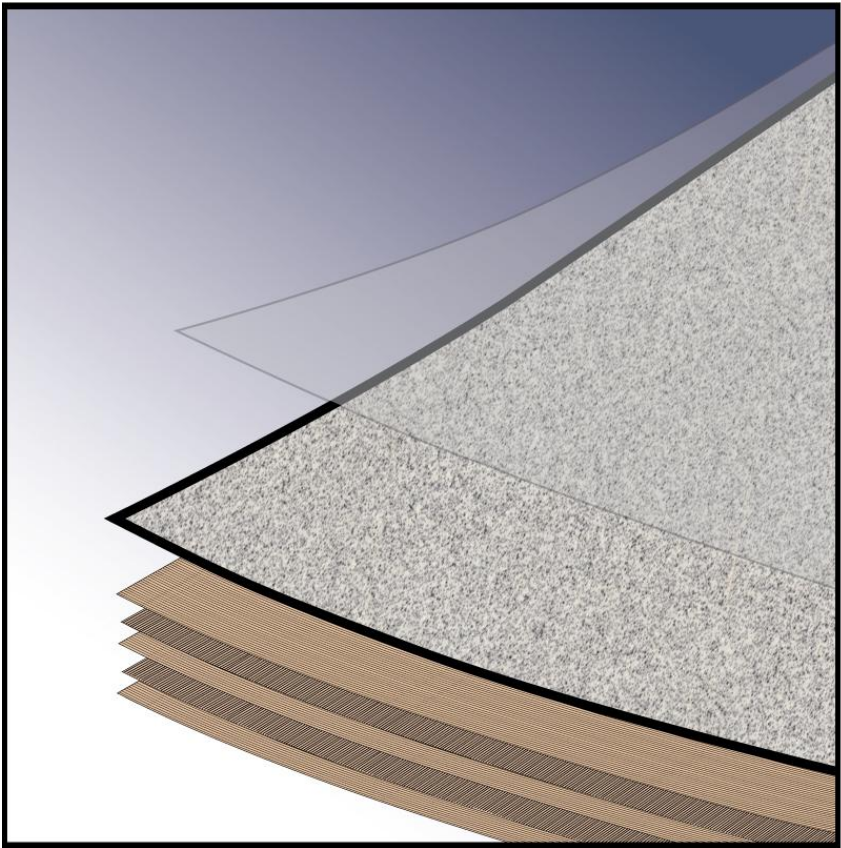
Cold Aisle



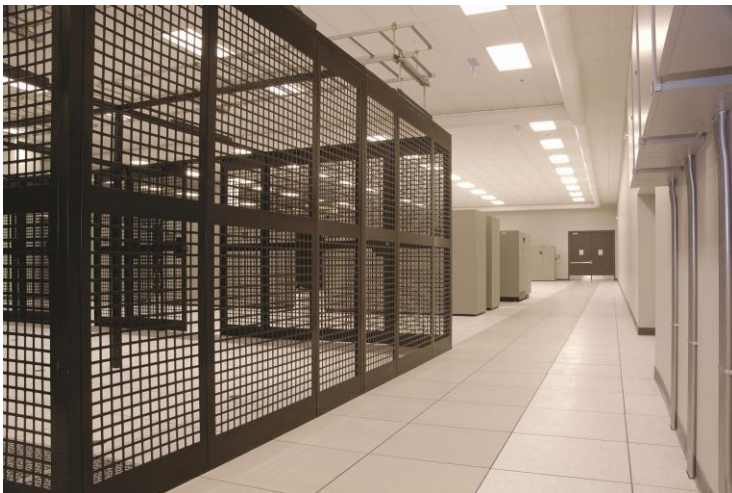
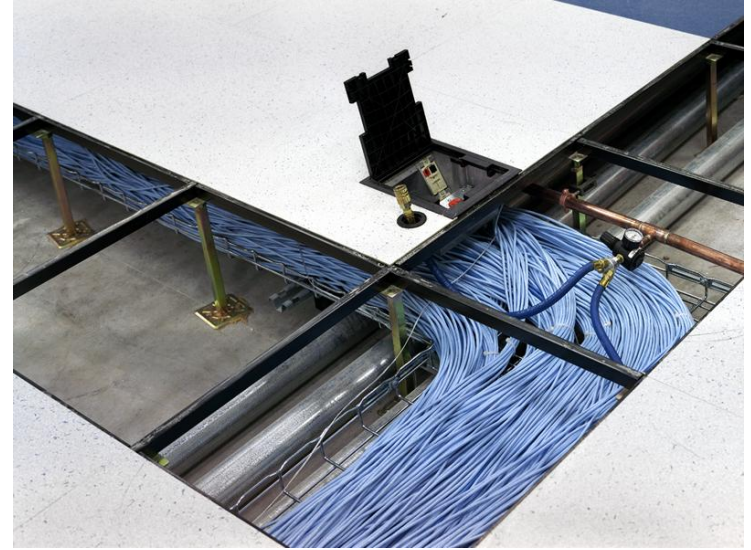
Datacenter Access Flooring Systems

Smart Trim Technology

- Monolithic transition
- Trim is part of decorative design
- “Criss/Cross” kraft paper strengthens laminate



Data Center Design



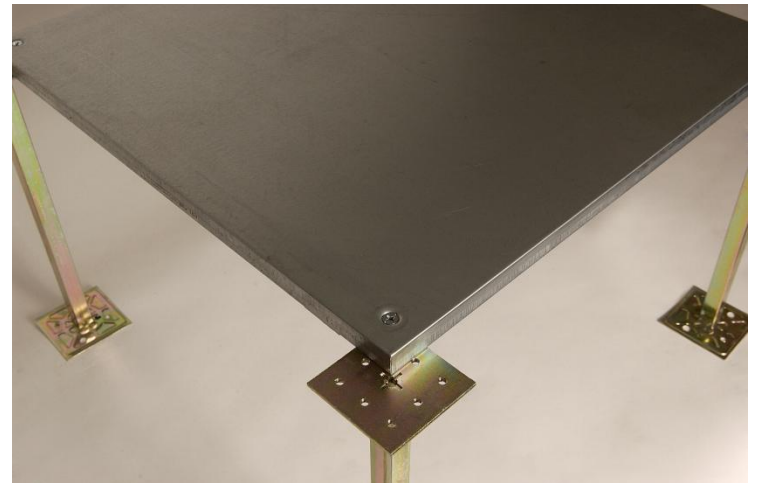
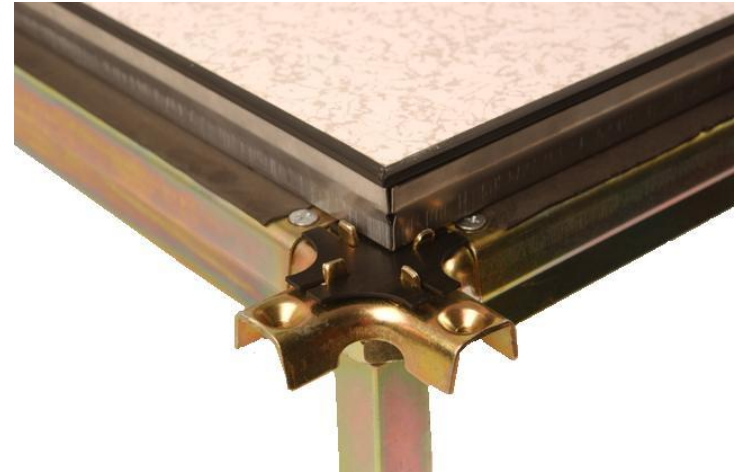
Testing

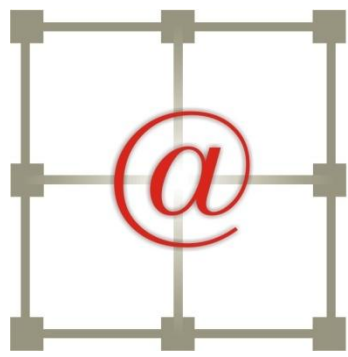
All Products are tested according to CISCA (Ceilings and Interior Systems Construction Association) and meet or exceed the design loads of each criteria.



Woodcore System

- High-Density wood core encapsulated by formed steel.
- Lighter weight for older buildings.
- Easier to cut panels.
- With steel fluctuations, may be more economical.





ASM

innovations in access flooring

